

Smart Aligner – Universal Bracket and Inserts Course



MultiWave Sensors

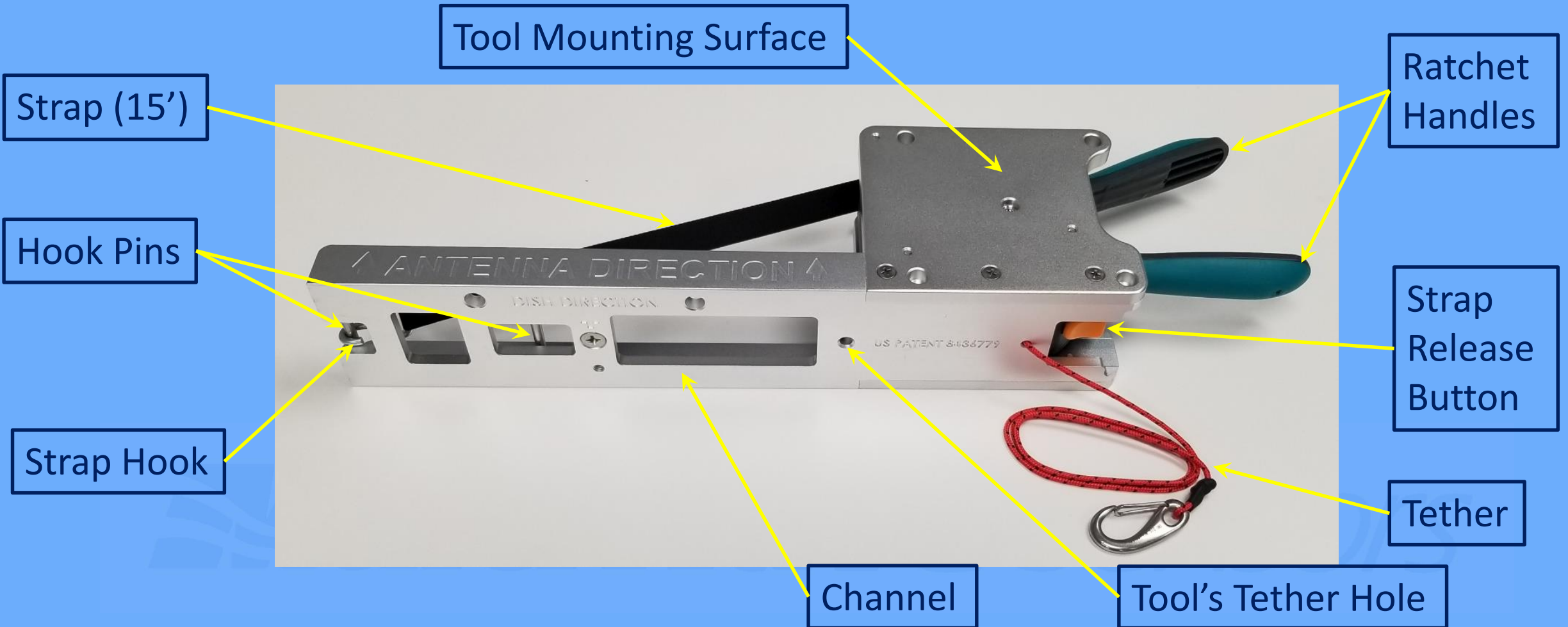
Topics Covered

Note: This training course assumes that the Introductory Course has been completed and the user is familiar with the basic operation of the Smart Aligner System.

- | | |
|-------------------------------|--------------|
| 1. Universal Bracket Details: | Slide 3 |
| 2. Small Cell Antennas: | Slides 4 - 5 |
| 3. Ubiquiti Antennas: | Slide 6 |
| 4. What is an Insert: | Slides 7 - 8 |
| 5. AIR 21 Insert: | Slide 9 |
| 6. AIR 32 Insert: | Slide 10 |
| 7. Nokia Insert (FASB): | Slide 11 |
| 8. AIR 6488 Insert: | Slide 12 |

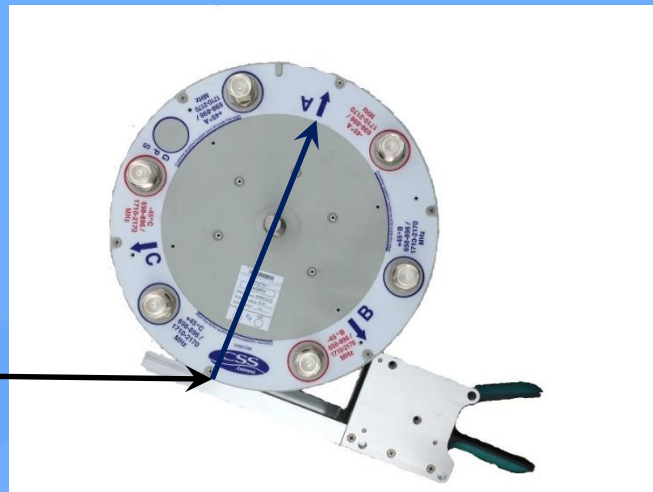
Universal Bracket

1. The parts of the Universal Bracket (Bracket) are shown below:



Small Cell Antennas

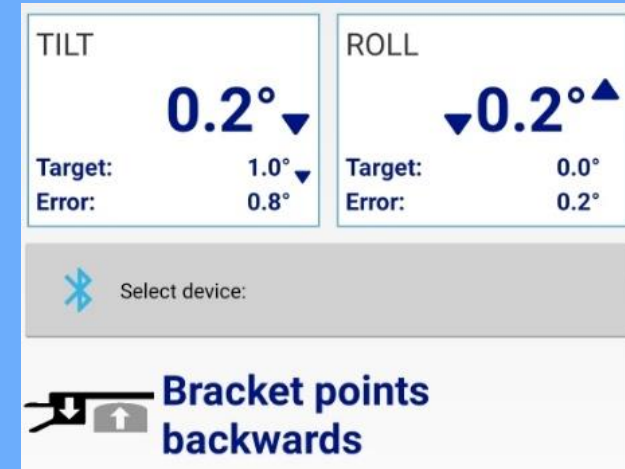
1. In a similar way with microwave dishes with shrouds, the Bracket can also be used on Small Cell Antennas without options.
2. The Channel needs to be tangent to the null axis as can be seen below:



Channel tangent
to null axis A

Small Cell Antennas

- Alternatively, the Channel can be oriented tangentially to the primary A axis and use the Alternate Bracket Mounting in the app (Backwards). See Advanced App Course.



MultiWave Sensors


Ubiquiti Antennas

1. The Bracket Channel is mounted on the front of the Ubiquiti antenna because there is a flat reference surface. Again, the app must reflect the Alternate Bracket Mounting method (backwards).



TILT	0.2°▼	ROLL	▼0.2°▲
Target:	1.0°▼	Target:	0.0°
Error:	0.8°	Error:	0.2°

Select device:

 **Bracket points backwards**

What is an Insert

1. An Insert is an optional part that attaches to the Channel of the Bracket in order to change its characteristics.
2. If the backplane of the antenna is not flat or requires a longer channel, then an Insert needs to be used.
3. The Bracket with Insert gets attached to the antenna by placing the strap around the antenna. This strap is then tightened by using the Ratchet.



What is an Insert

4. The Insert is attached to the Channel using the Insert Mounting Screw, which is permanently attached to the Bracket.



Insert Mounting Screw
(large Phillips head)

AIR 21 Insert

The Ericsson approved AIR 21 Insert allows the bracket to be fastened to the AIR 21 antenna without touching the delicate backplane (vent screen).

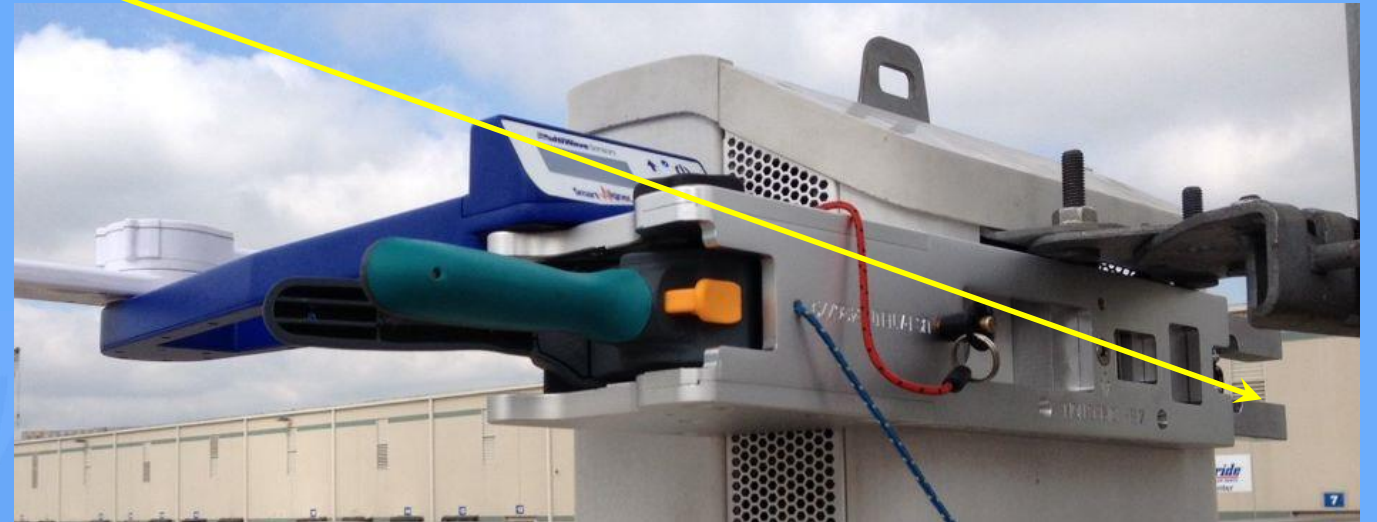
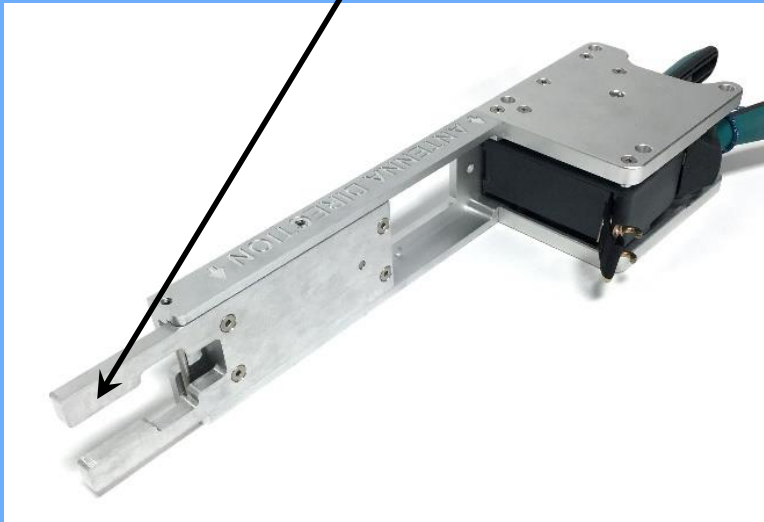
U shaped insert that straddles the back of the AIR 21 antenna.



AIR 32 Insert

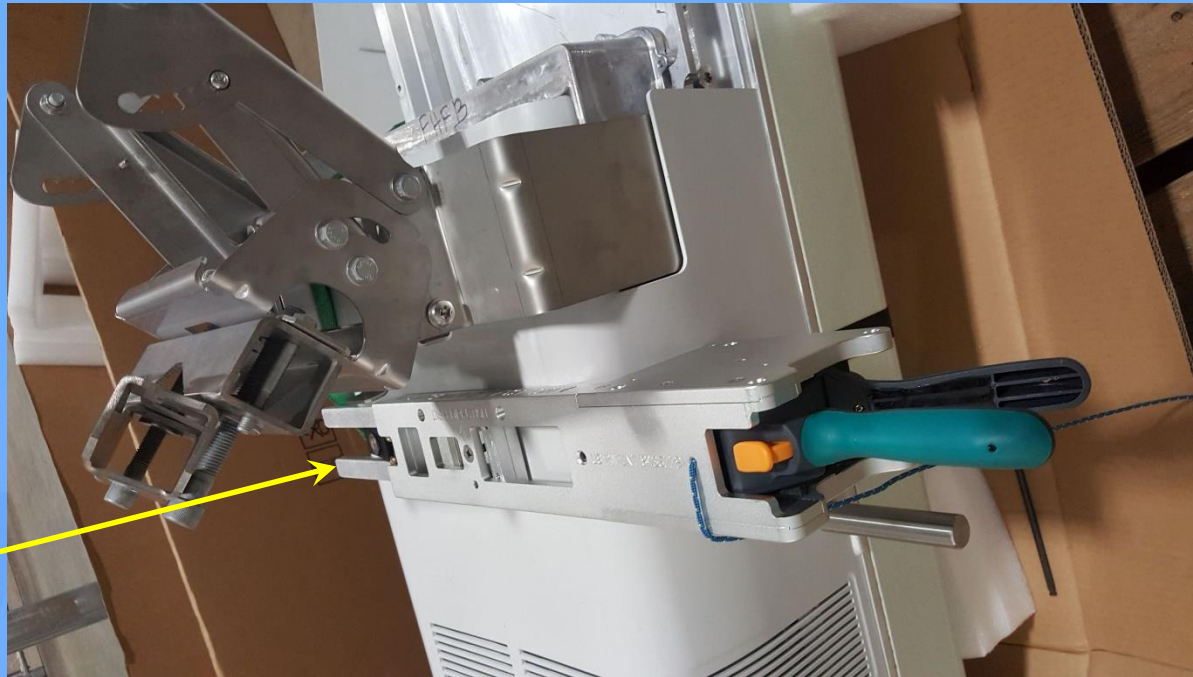
The Ericsson approved AIR 32 Insert increases the Channel length from 10" to 12.5". This increased length allows the Channel to span both corners of the flexible backplane for accurate referencing.

AIR 32 Insert



Nokia FASB Insert

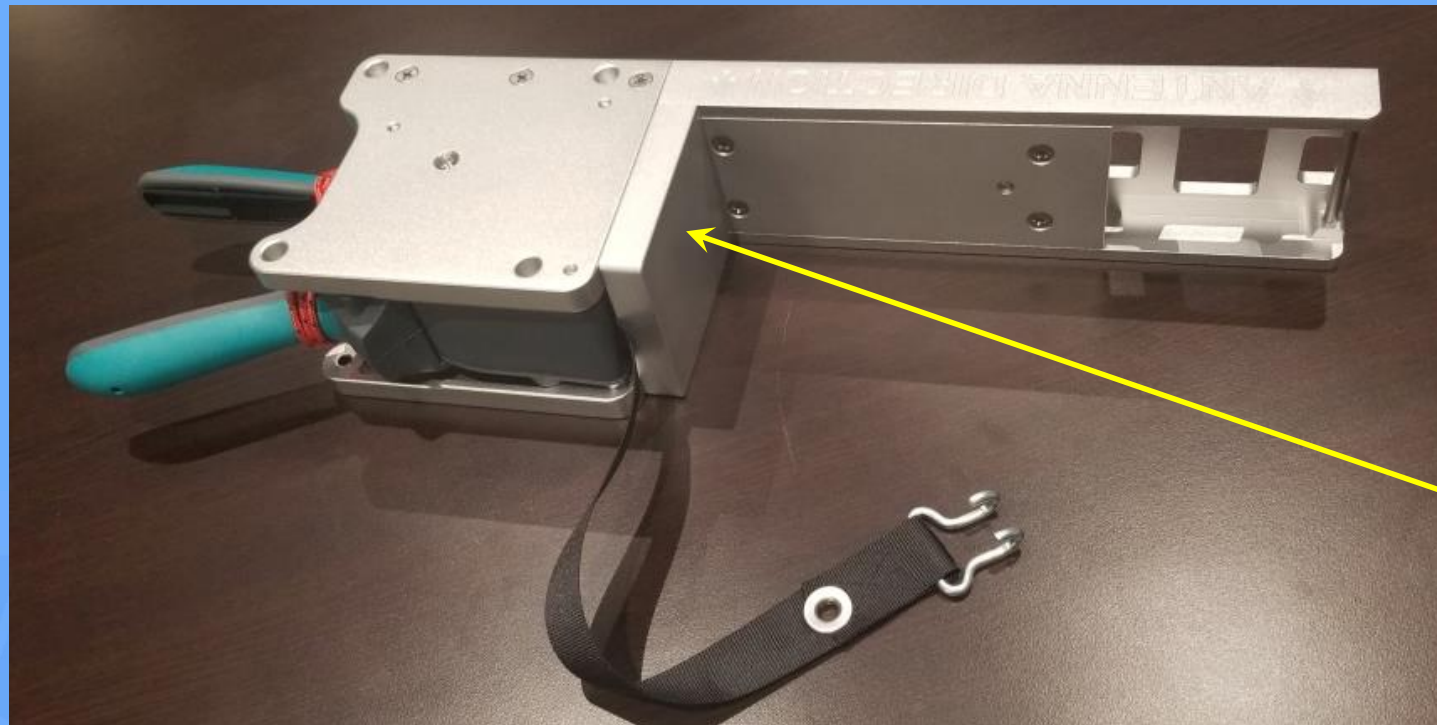
The Ericsson approved Nokia FASB Insert increases the Channel length from 10" to 15". This increased length allows the Channel to span both corners of the flexible backplane for accurate referencing.



Nokia FASB Insert

AIR 6488 Insert

The Ericsson approved AIR 6488 Insert provides clearance spacing for the cooling fins on the back of this antenna.



AIR 6488 Insert

Course End

The logo for MultiWave Sensors, featuring a stylized wave icon to the left of the text "MultiWave Sensors". The text "MultiWave" is in a bold, sans-serif font, and "Sensors" is in a lighter, italicized sans-serif font.